

BENWICK PRIMARY SCHOOL



Exclusions Policy

School Name: Benwick Primary School

Date Agreed at FGB:

Next Review: December 2023

Date shared with staff:

Date published on school website:

Signed: Role:

Introduction

This policy should be read in conjunction with our behaviour policy. This policy has been written using DfE guidance from; *Behaviour in Schools Advice for headteachers and school staff July 2022, and Suspension and Permanent Exclusion from maintained schools, academies and pupil referral units in England, including pupil movement Guidance for maintained schools, academies, and pupil referral units in England July 2022*

At Benwick Primary School, we believe that it is essential for everybody to create a caring, supportive and positive ethos and environment for all. Children and adults thrive in a calm and purposeful learning community that respects and values every individual. We believe strongly that an emotionally literate school with a clear, ethos and policy of positive behaviour management helps support the social and emotional aspects of learning and behaviour patterns of our children and staff. Our school will suspend when children's behaviour significantly disrupts teaching in order to help preserve the right to education of the other pupils or when behaviour is dangerous to the pupil themselves or others. The school will follow the most recent Local Authority guidance on permanent exclusions.

Key points for exclusions

- Only the head teacher can suspend a pupil.
- Suspensions can be for half a day or more, on 1 or more occasion with a maximum of 45 days in a school year.
- If behaviour is an issue at lunchtime then pupils can be suspended from the site during this period.
- The behaviour of pupils outside of the school can be considered grounds for suspension/exclusion with reference to the school behaviour policy.
- If pupils are suspended and sent home for poor behaviour, it will be marked on the register as **an "E"**.
- Suitable work to do at home will be provided for a child who has been suspended for up to 5 days.
- Looked After pupils should have provision from the first day of any suspension.
- If a pupil is suspended for more than 5 days the Head Teacher is responsible for their full time education from the 6th consecutive day.
- Suspended pupils will be encouraged to participate in all stages of the exclusion process, where appropriate, taking into account their age and understanding.
- The decision to exclude a pupil permanently should only be taken in response to serious or persistent breaches of the school's behaviour policy and/or allowing the pupil to remain in school would seriously harm the education or welfare of the pupil or others in the school.
- Parents have the right to dispute the decision to exclude.
- Where an excluded pupil is of compulsory school age the head teacher will notify the parents in writing that for the first five days of an exclusion the parent is legally required to ensure that their child is not present in a public place during school hours without reasonable justification and that the parent may be prosecuted or given a fixed penalty notice if they fail to do so.
- For pupils in Primary Schools who are permanently excluded the Local Authority becomes responsible for the full time education from the 6th day.

Exclusion of Vulnerable Pupils

The Head teacher will, as far as possible, avoid excluding permanently any pupil with an EHCP or a Looked after Child. If the head teacher is considering the permanent exclusion of a pupil in these categories they will discuss it with the local authority, highlighting their

concerns about the placement of the pupil in the school and the possible need for additional support or an alternative placement.

The Duty of the Head Teacher

Once the head teacher makes the decision to exclude the pupil, the parent will be informed as soon as possible. This will be followed up with a letter.

The head teacher will then notify the governing body and the local authority if:

- it is a permanent exclusion (including any decision to make a fixed term exclusion permanent);
- an exclusion for more than five school days (or more than ten lunchtimes) in any one term;
- any exclusion which results in the pupil missing a National Curriculum Test (SATs)

For all other exclusions the head teacher will notify the local authority once a term.

The head teacher will decide if a reintegration meeting is necessary following the period of exclusion. If it is, we will make reasonable efforts to arrange the meeting for a time that is convenient for parents and give notice of the time, date and location. The pupil would normally attend for at least part of the interview, depending on their age and understanding.

Parents – Challenging Exclusions

The letter sent to parents following the exclusion will notify them what to do if they disagree with the decision. Parents can ask the school's governing body to overturn the exclusion if either:

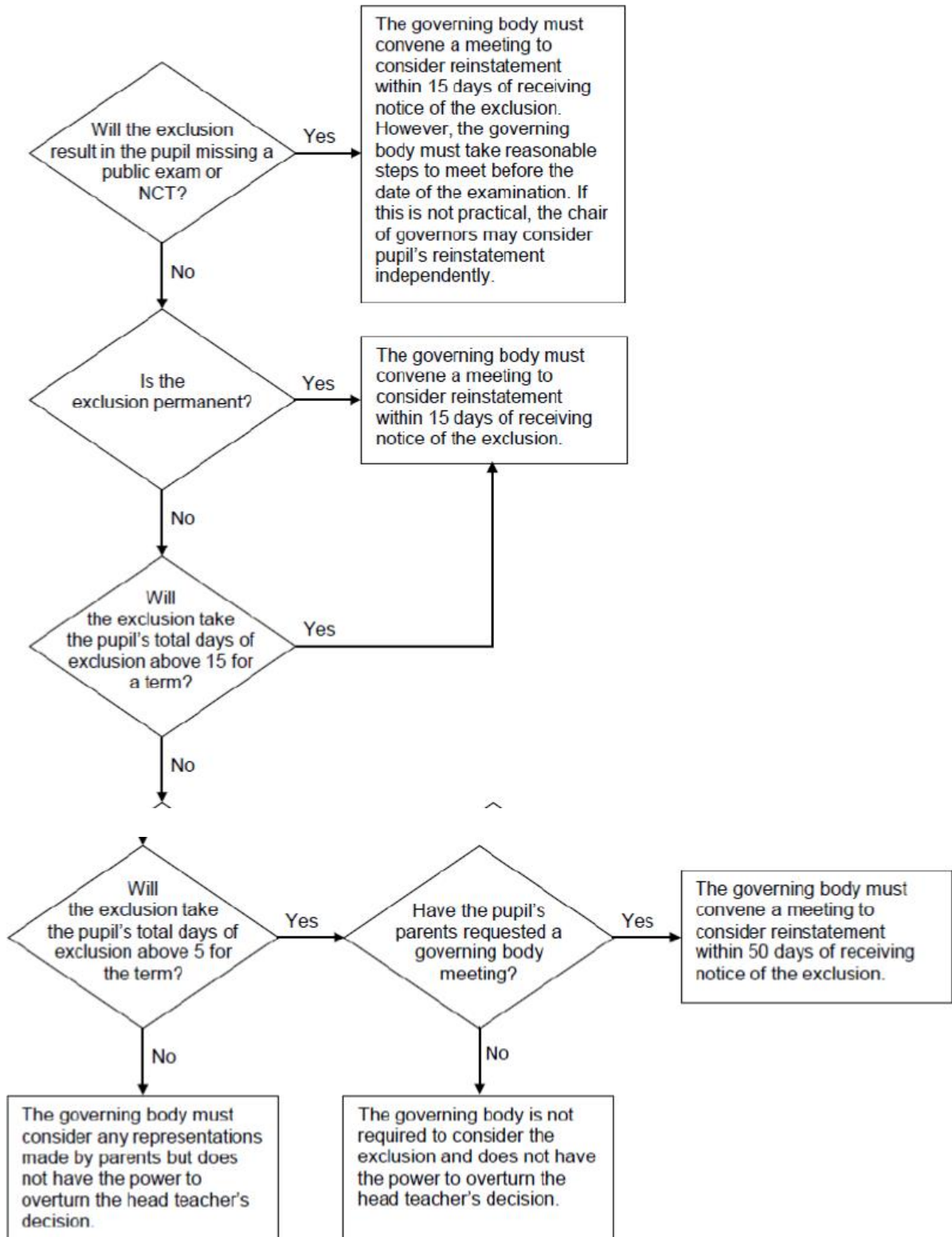
- the pupil has been excluded for more than 5 days
- the exclusion means they'll miss a national curriculum test

The parents will be invited to a meeting with the a panel of 3 school governors within 15 school days. If the governors don't overturn the exclusion, parents can ask for an independent review by the Academy Trust. The governors will tell you how to do this.

If the exclusion is for 5 days or fewer, Parents can still ask the governing body to hear their views but the governors can't overturn the head teacher's decision.

The Duty of the Governing Body

Annex A – A summary of the governing body’s duties to review the head teacher’s exclusion decision



The governing body may delegate its functions to consider an exclusion to a designated sub-committee. References to days mean 'school days'.